

FISH HABITAT IMPROVEMENT COMPLETION FORM

REGION 3

Stream or Lake Name Horse Creek Tributary to Rancheria Creek

County Mendocino Township 13N Range 15W Section 2&3 1/2S

Section of stream work One mile upstream from confluence with Rancheria Creek

Sponsor Fish and Game Work crew New Growth Forestry

Landowner name, address, phone # Congaree River Limited (Western Timber Services)

P.O. Box 1136 Arcata, CA 95521 and Harry Merlo 11 SW Fifth Ave., Ste. 4200. Portland OR 97204

Project duration Dec 1986 - Jan 1987 Man-days expended _____
(dates)

Source of funding SB400 Total cost _____

Project benefit Fish passage Species affected SH

Number of jams removed 10 Number that were barriers 4

Cubic yards of material removed _____ Amount of sediment _____

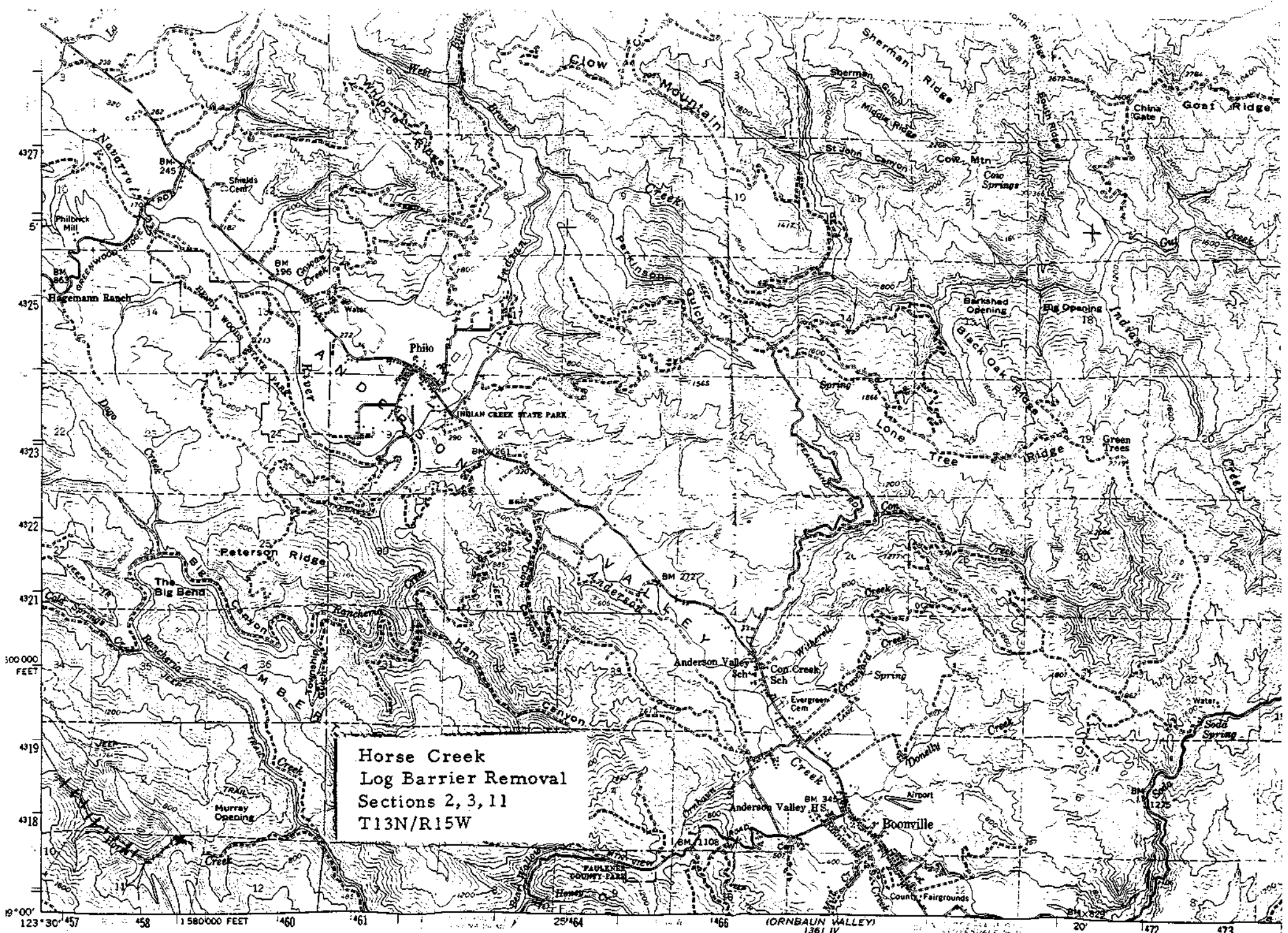
Miles of stream opened 1 1/2 - 2 Miles improved _____

Methods used Hand labor, chainsaws - burn material

Further action recommended _____

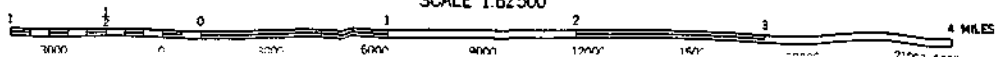
Location of maps and photos _____

Additional comments, explanations, or details:



Horse Creek
 Log Barrier Removal
 Sections 2, 3, 11
 T13N/R15W

19°00' 123°30' 457 458 1 580000 FEET 460 461
 Mapped, edited, and published by the Geological Survey
 Control by USGS and USC&GS
 Topography from aerial photographs by photogrammetric methods



HORSE CREEK
SITE DESCRIPTIONS

Site 1. Debris jam, 60'x20'x8', not a barrier. Causing side bank erosion and bringing down adjacent trees. Widen channel and burn.

Site 2. Partial barrier, 25'x25'x7', at confluence of two main branches. Full remove and burn.

Take loose - leave big stuff

Site 3. Partial barrier, completely embedment of 8' of gravel. Partial removal and burn.

Stay to center - make it drop

Site 4. Waterfall. Minor removal of debris from channel to lower jump slightly and remove obstructions.

Site 5. Debris jam, not a barrier, in narrow section of creek. Clear a channel for debris flushing from above. Burn.

Site 6. Debris jam behind old Humboldt crossing, not a barrier. Clear a channel to one side.

open to north side

Site 7. 5' waterfall and downstream debris pile. Remove obstructing pieces from the spillway and reduce height of fall as necessary. Remove downstream debris.

Site 8. Partial barrier impounding 15'-20' of bedload. Clear a channel and burn.

Site 9. Debris jam, not a barrier, with active slides from each bank. Clear a channel and burn.

Minimal removal - Don't increase erosion

Site 10. Debris jam, not a barrier, impounding 6' of bedload. Clear a channel for low flow passage.

Site 11. Complete barrier, no fish above. Clear a channel and burn.

Site 12. Debris jam. Clear center of channel.

Site 13. 4' fall over rock and debris. Remove debris.

Site 14. 4' fall over rock. Remove adjoining log to lower and clear jump.

Site 15. 4' fall. Lower jump.

Site 16. 5' drop over bedrock formation. Blasting may be necessary.

Site 17. Debris jam, not a barrier. Clear a channel.

Site 18. Partial barrier impounding 4' of bedload. Clear a channel.